



# San Angelo Federal Credit Union

235 W 1st Street  
San Angelo, Texas 76903  
Ph: (325)653-8320 ~ Fax: (325)653-8658  
ART:(325)659-3169  
www.safcu.com

MAY  
2013

*With members first, SAFCU succeeds-not just survives*

~ We will be closed  
Monday, May 27th  
in observance of  
Memorial Day ~

**Skip-A-Payment will be  
available for summer  
months of June, July &  
August 2013.**

**Go to www.safcu.com  
and download the form,  
or come by the Loan  
Department.**



## VACATION LOANS

Available June 1 - August 31

9.00% APR

12 Months

Signature Loan

(with approved credit)

Call Karen, ext. 207 or Patti, ext. 202



We want to wish all  
Mothers a

**HAPPY MOTHER'S  
DAY !!**

MAY 12TH



## DON'T MISS OUT



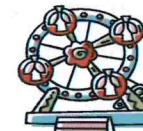
**Car loans as low as 2.25% APR**  
\*special terms and conditions apply

**Air Conditioner loans as low as 6.75% APR**  
\*special terms and conditions apply

Finance a new or used vehicle\* in May or June  
and you will be entered into our July 1st drawing  
for a Family Fun Day!

**Prize:** Choice of 4 tickets to either *Fiesta Texas* or  
*Schlitterbahn* and **\$100.00 cash!**

\*This offer includes refinances from another financial institution  
Minimum loan amount of \$10,000.00  
With approved credit.



## Amusement Park Ticket

### Pricing

Six Flags Over Texas Arlington, Tx. (General Admission)	<b>\$37.79</b>
Hurricane Harbor** (General Admission)	<b>\$23.75</b>
Six Flags Fiesta Texas San Antonio, Tx. (General Admission)	<b>\$37.30</b>
Schlitterbahn Water Park New Braunfels, Tx. (General Admission)	<b>\$46.00</b>
(Child Admission ages 3-11 and ages 55+)	<b>\$36.79</b>

**Lowest prices in town!  
Available to SAFCU members  
and non-members**

\*\*Opens May 11, 2013

